



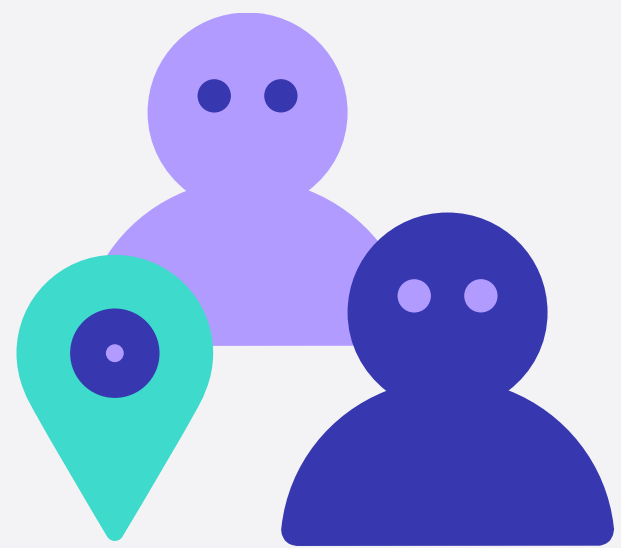
Employee onboarding with Insight and Jira Service Desk



Hakan Bahadır
Solution Architect
hakan.bahadir@mindville.com



About Mindville



Team

45+ employees in
4 countries



Apps

14 apps on
Atlassian's Marketplace



Customers

2800+ customers in
100+ countries



Partners

160+ partners
around the world





#firstday



The actors



Hiring Manager



Talent Acquisition Team

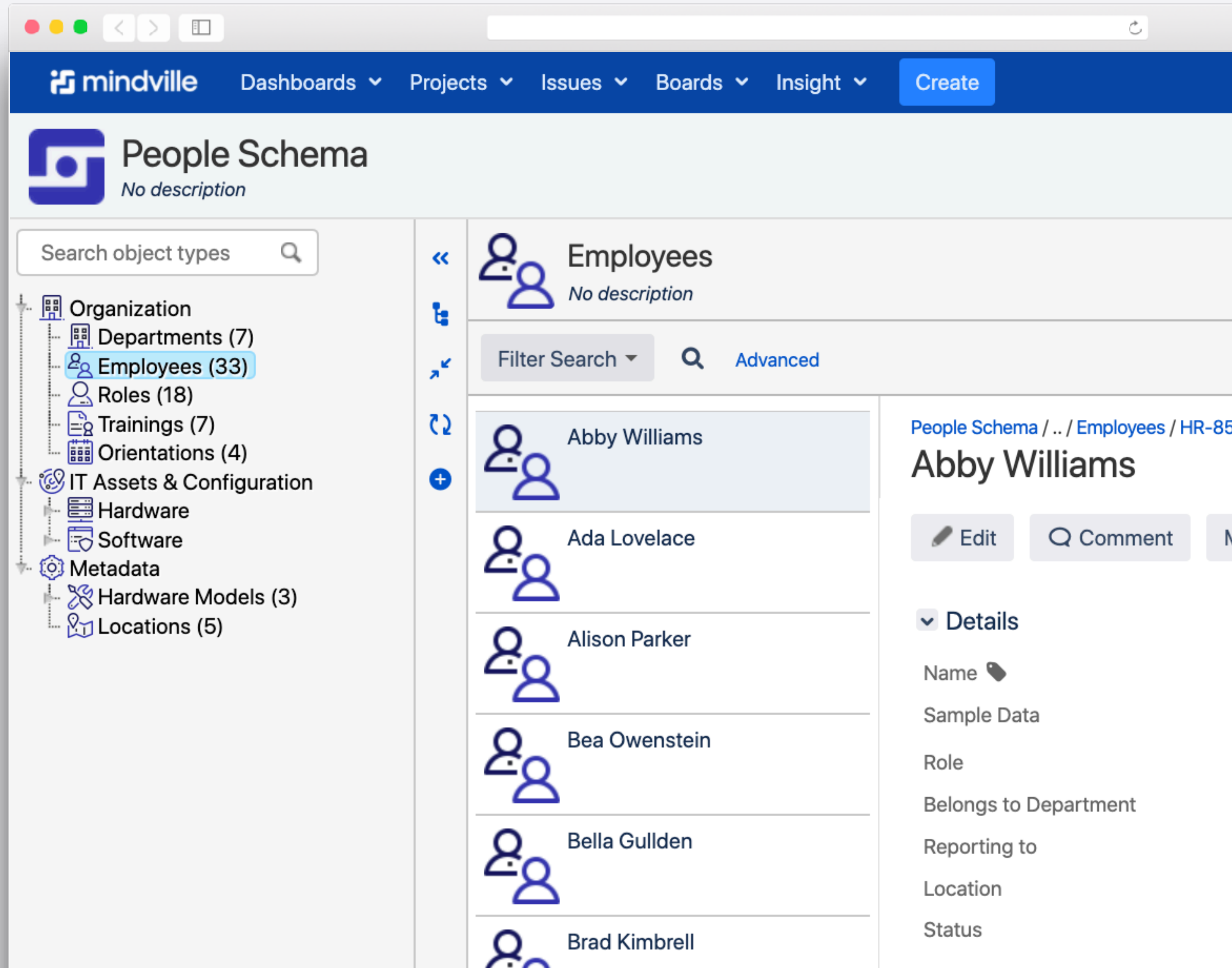


IT Administrator

How to **automate** your Employee onboarding process

DEMO

Define custom asset structures



The screenshot displays the Mindville application interface. At the top, a navigation bar includes the Mindville logo, a search bar, and menu items for Dashboards, Projects, Issues, Boards, and Insight, along with a 'Create' button. Below this, the 'People Schema' section is active, showing a tree view of object types on the left and a list of employees on the right.

Object Types Tree:

- Organization
 - Departments (7)
 - Employees (33)**
 - Roles (18)
 - Trainings (7)
 - Orientations (4)
- IT Assets & Configuration
 - Hardware
 - Software
- Metadata
 - Hardware Models (3)
 - Locations (5)

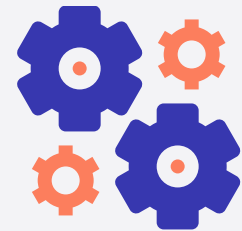
Employees List:

Employee Name
Abby Williams
Ada Lovelace
Alison Parker
Bea Owenstein
Bella Gullden
Brad Kimbrell

Employee Details Panel (Abby Williams):

- Name
- Sample Data
- Role
- Belongs to Department
- Reporting to
- Location
- Status

Jira Workflows



Update custom fields

Update custom fields with values from objects

HR Use Case

- Update Manager field
- Update Start Date field
- Update End Date field



Update objects

Update object values with pre-defined values

HR Use Case

- Update status of equipment
- Update information about employees



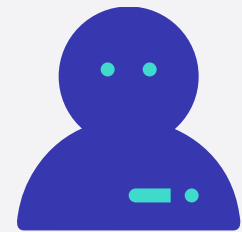
Create objects

Create objects with values from custom fields

HR Use Case

- Create new employee objects
- Create new equipment objects

Jira Workflows



Assign issues

Assign an issue based on an object value.

HR Use Case

- Assign to Manager
- Assign to HR Assistant

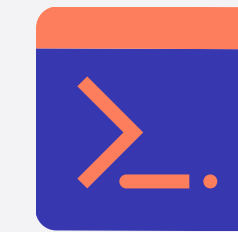


Update custom fields based on IQL queries

Use IQL to filter on objects to assign to a custom field.

HR Use Case

- Add mandatory trainings



Run Groovy Scripts

Use groovy scripts to create pre-defined tasks automatically... and much more.

HR Use Case

- Create predefined linked issues



Recap

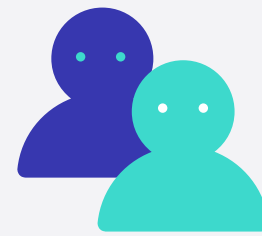
Use **Insight** and **automation** when **onboarding** employees to make sure all tasks are taken care of and to **create** and **store** employee related **assets**.

The Business Value



Save time and money

By automating the processes you need fewer people and better management of assets will save time and money



Employee Satisfaction

New employees will be happier when everything is in place on their first day and following weeks



Ongoing benefits

Saving time and money by automating other related processes

Use Cases

HR

IT Assets

CRM

Service Catalogue

Facility Management



Available on Atlassian Marketplace



Server



Data Center



Cloud



Thank you!



Hakan Bahadir
Solution Architect
hakan.bahadir@mindville.com

Vasagatan 36
111 20 Stockholm
Sweden
+46 8 733 31 25

